



VORTEX

Beyond Your Expectation



**NOT JUST MIXING,
BUT YOUR ENTIRE
BUSINESS**

- 
- Conical Mixer
 - Plough Mixer
 - Ribbon Mixer
 - Twin Shafts Paddle Mixer

Vortex is a leading powder mixer manufacturer in Asia based in Shanghai and Zhengzhou, China. We founded in 2000 from a small workshop to an integrated company with 150 people and 500 sets mixers output capacity per year. We rely on long-standing relationships and aim to live up to our own exacting standards of expertise and experience in all fields of bulk material handling processing.

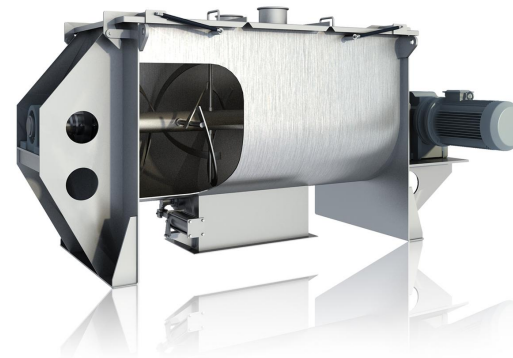
Diligent design, precision fabrication, and continuous innovation make Vortex to be the first choice by end customers. Furthermore, we also have close relationship with Europe mixer partners to communicate technology and work together to present smart mixer machinery to customers.

We do not only focus on quality, but also pay attention to customer's process. Our competitive edge has come from generating added value for customers worldwide. We design the mixers for multiple functions such as mixing, drying, coating, cooling and reaction in food, chemicals, pharmaceutical, feed, building

VISION

- Process Engineering and Technology for the Highest Standard
- Thinking Now What Customers Need Next

Ribbon Blender



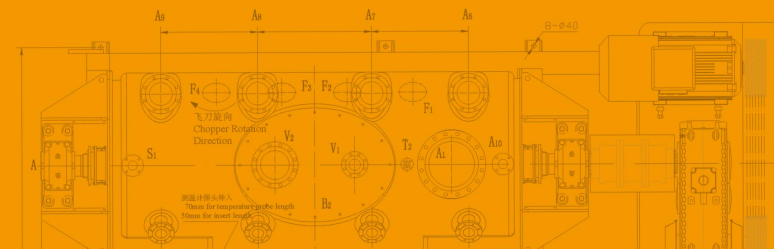
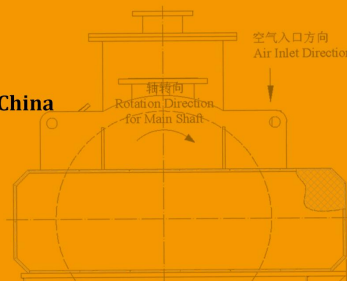
- Mild mixing which will not break the physical size of material
- More loading factor (between 30%-70%, but generally speaking, 60% is maximum for heavy bulk density material)
- Easy cleaning
- Easy Maintenance
- Low Power Energy

Ribbon Blender is a basic industrial mixing machine. They consist, basically, of a trough-shaped shell with a semicircular bottom, fitted with a horizontal longitudinal shaft on which are mounted arms supporting a combination of ribbon blades, paddles or helical screws set at a fairly close clearance to the semicircular mixer body so that no layer of material remains on the bottom of the mixer. The most effective design of ribbon layout is the double spiral in which the outer ribbon moves the product in one direction and the inner ribbon moves it in the opposite direction. The ribbons rotate and move materials both radially and laterally to insure thorough blends in short cycle times. Ribbon agitators are used for blends that will be between 30 and 70% of the rated capacity of the blender.



VORTEX Company

Address: No. 128, Huayuan Road, Hongkou District, Shanghai, China
 Tel: 021-60649075
 Mobile: 86-18039118812
 Email: nick@incmachine.com
<http://www.vortexmix.com>
<http://www.incmachine.com>



Ploughshare Mixer

Ploughshare Mixer is widely used for different kinds of applications such as mixing, coating, drying and reaction with very high homogeneity. It has a cylindrical shell with plough shovel welded or bolted on arms and the shaft runs at high speed to effect a fluidizing action. The plough shovel lifts the material upward, and the material settles in a pattern. Whirling, three-dimensional product movement makes output material with very high homogeneity within short mixing time.



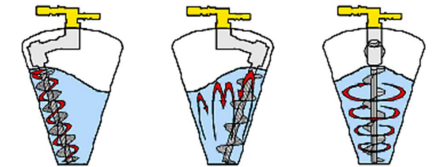
- Fast mixing with chopper which can break the caking of material
- High Homogeneity
- Multiple Functions like mixing, coating, drying and reaction
- Short mixing time
- Flexible design according to processed material
- Easy cleaning
- Easy maintenance



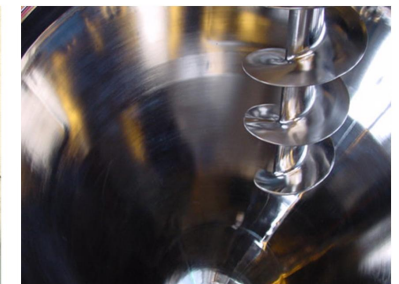
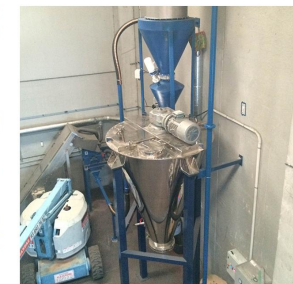
Conical Screw Mixer



- Low shearing
- Mild Mixing
- Clean Discharge
- Lower Risk of Contamination
- Flexibility of Batch Size
- Low Energy Consumption



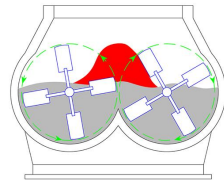
Conical Screw Mixer can also be called Nauta Mixer. It consists of drive part, cylinder and screw agitator inside. The screw will lift the material up by fast speed and removes material away from the wall and deflects it into the centre of the vessel. Repeat rotation and revolution of the screw and form shearing, convection and diffusing inside the tank.



Twin Shafts Paddle Mixer



- Fastest mixing time
- High homogeneity
- Low shear forces
- Quick discharge time and low residues



Twin Shaft Paddle Mixer consists of two shafts and two semicircle vessel. The material will be lifted up by overlapping paddle and make material in a non gravity action which will have a perfect mixing homogeneity result.



Additional Characteristics for ALL MIXERS

- Heavy Duty Design for drive unit
- Vacuum Design of vessel for typical process
- Cooling/Heating jacket design
- Explosion-proof design
- Custom design according to customer's requirement



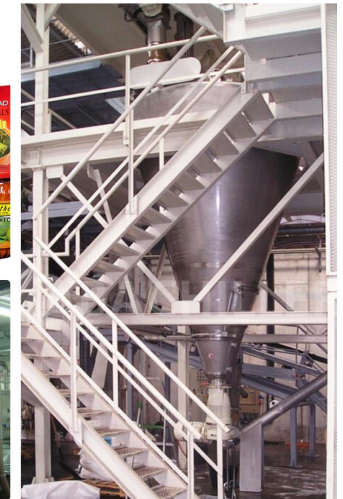
Accessory Products

- Vacuum Conveying
- Belt Conveying
- Screen Sifter
- Filter System
- Filling Hopper
- Package Machine
- Screw Conveying
- Weighing System
- Air Compressor



Industry-Process Engineering and Technology for the Highest Standard

- Foodstuff
- Chemistry
- Fertilizer
- Starch
- Building Material
- Pharmaceutical
- Plastics
- Pesticides
- Metallurgy
- Pigment
- Cosmetics
- Animal Feed
- Environment
- Dyestuff
- Ceramics





Shanghai Vortex Machinery Company

Address: No. 128, Huayuan Road, Hongkou District, Shanghai, China

Tel: 021-60649075

Mobile: 86-18039118812

Email: nick@incmachine.com

<http://www.vortexmix.com>

<http://www.incmachine.com>